



DENVER
PUBLIC
SCHOOLS

Discover a World
of Opportunity™



Phone (720) 423-3411 • ricoh@dpsk12.org • servicecenter.dpsk12.org

DENVER PUBLIC SCHOOLS & RICOH USA, INC.

PC

Printer Driver Installation Guide

RICOH

2017

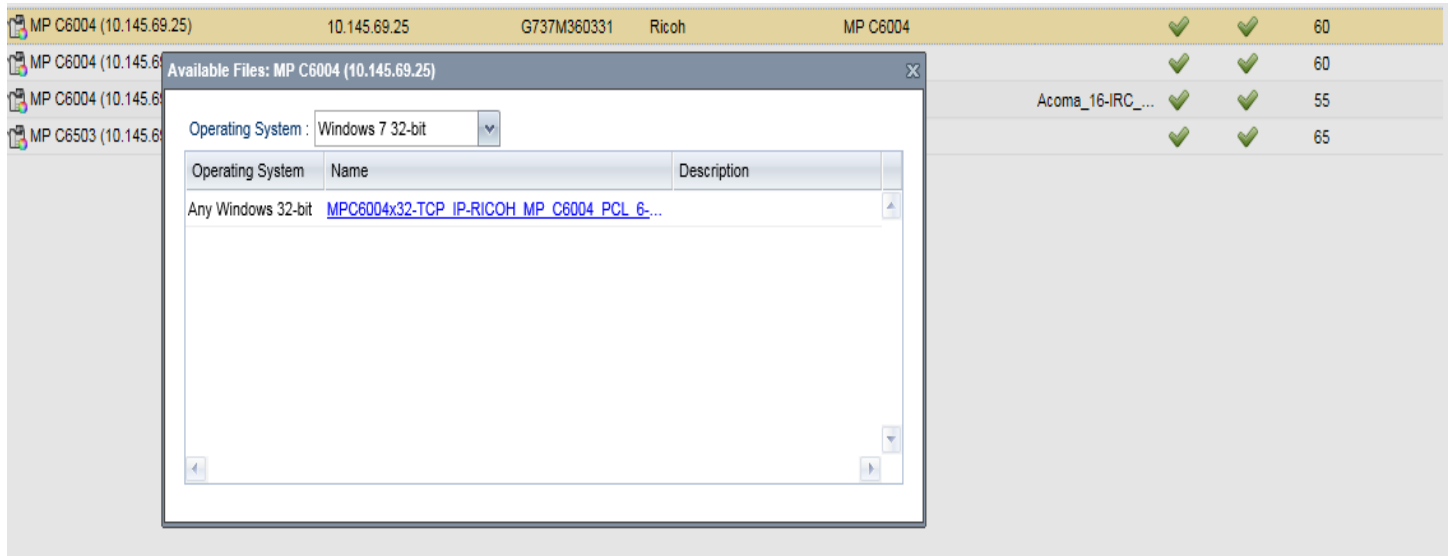
Ricoh install guide for PC.

1. Please go to the following web address.
 - a. <http://dpsprintdrivers.dpsk12.org:8080/drivers.html>
2. Now you will see the following page. Select the school folder on the left side of the screen and then select the Ricoh device listed that you wish to add to your computer.

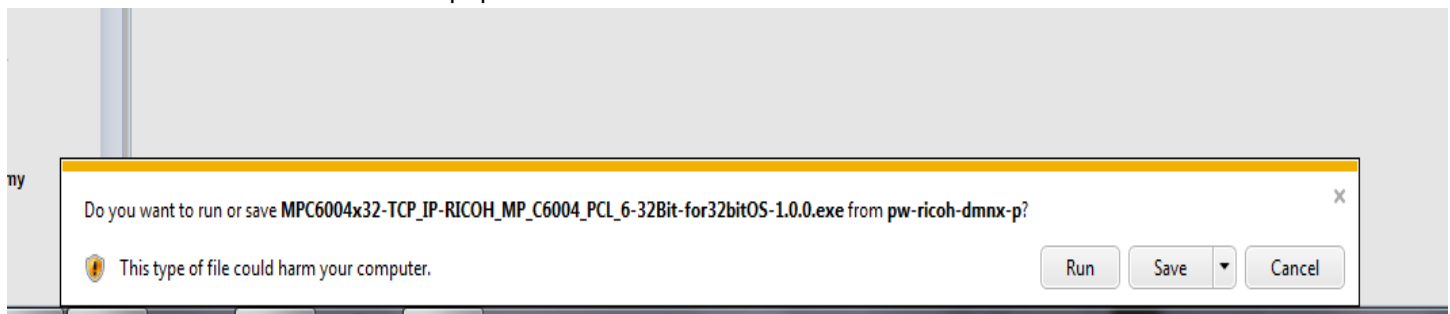
The screenshot shows the Ricoh Device Manager NX Enterprise web interface. On the left, there is a sidebar with a list of schools, each preceded by a folder icon. The '1617 Acoma' school is currently selected and highlighted in yellow. On the right, a table displays the details of the Ricoh devices associated with the selected school. The table has columns for Device Display Name, Address, Serial Number, Manufacturer Name, Model Name, Location, Color, Duplex, and PPM. There are 8 rows of device data, all of which are Ricoh MP series printers.

Device Display Name	Address	Serial Number	Manufacturer Name	Model Name	Location	Color	Duplex	PPM
MP 5054 (10.145.69.32)	10.145.69.32	G185R421226	Ricoh	MP 5054		✓	✓	50
MP C6004 (10.145.69.20)	10.145.69.20	G737M360213	Ricoh	MP C6004	Acoma_rm111a	✓	✓	60
MP C6004 (10.145.69.24)	10.145.69.24	G737M360379	Ricoh	MP C6004	Acoma_207_MP...	✓	✓	55
MP C6004 (10.145.69.25)	10.145.69.25	G737M360331	Ricoh	MP C6004		✓	✓	60
MP C6004 (10.145.69.27)	10.145.69.27	G737M360365	Ricoh	MP C6004		✓	✓	60
MP C6004 (10.145.69.28)	10.145.69.28	G737M360330	Ricoh	MP C6004	Acoma_16-IRC_...	✓	✓	55
MP C6503 (10.145.69.33)	10.145.69.33	C066CB00206	Ricoh	MP C6503		✓	✓	65

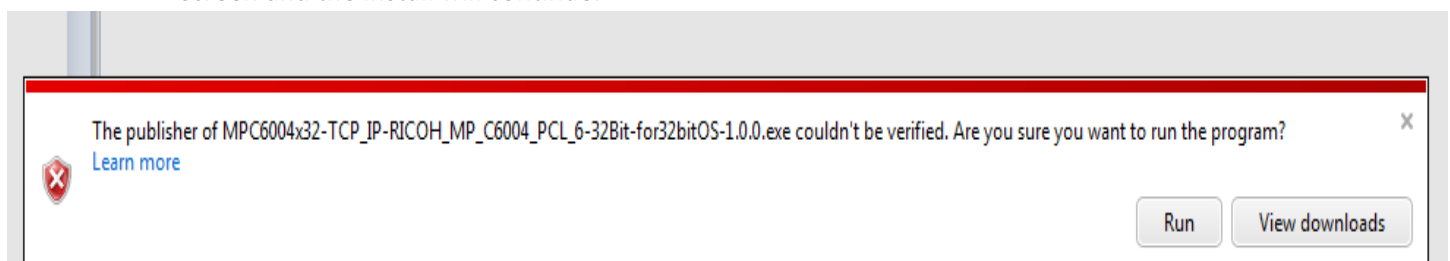
- Now you will get a pop on your screen. Click on the blue hyper-link, on the pop screen to begin downloading.
DMNX will automatically select your proper system/driver.



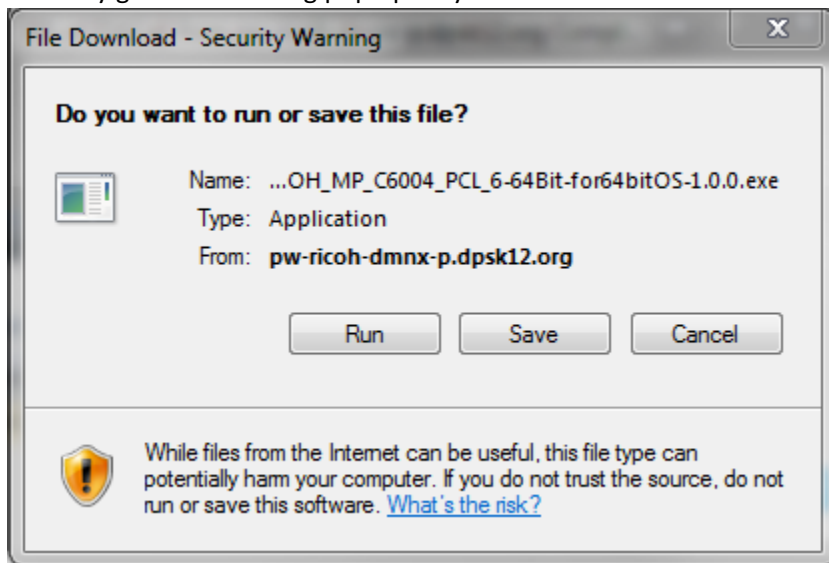
- Now you will have 10 to 20 seconds of download time before you see a pop on the bottom of your screen. Then click the "RUN" button on this pop screen.



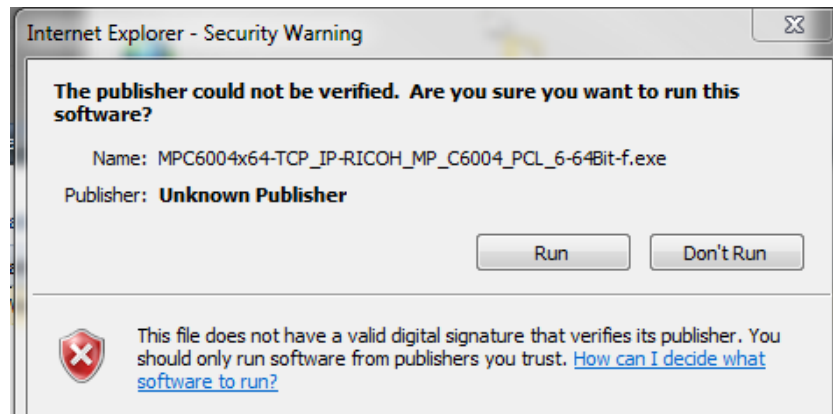
- You may get the following pop up on the bottom of the screen. Click the "RUN" button on this pop up screen and the install will continue.



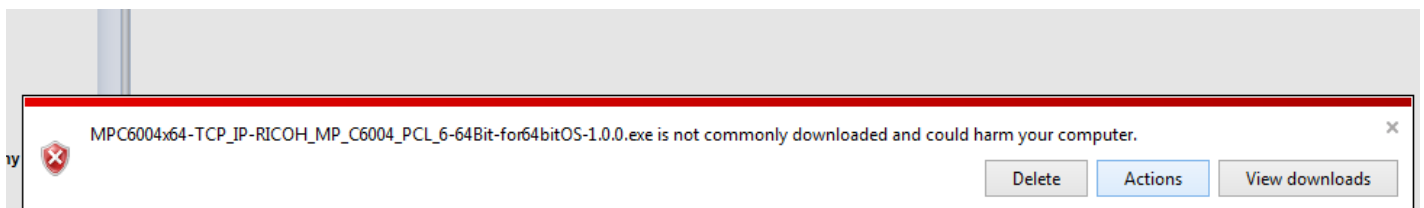
- b. You may get the following pop up on your screen. Click the “RUN” button on this pop up screen.



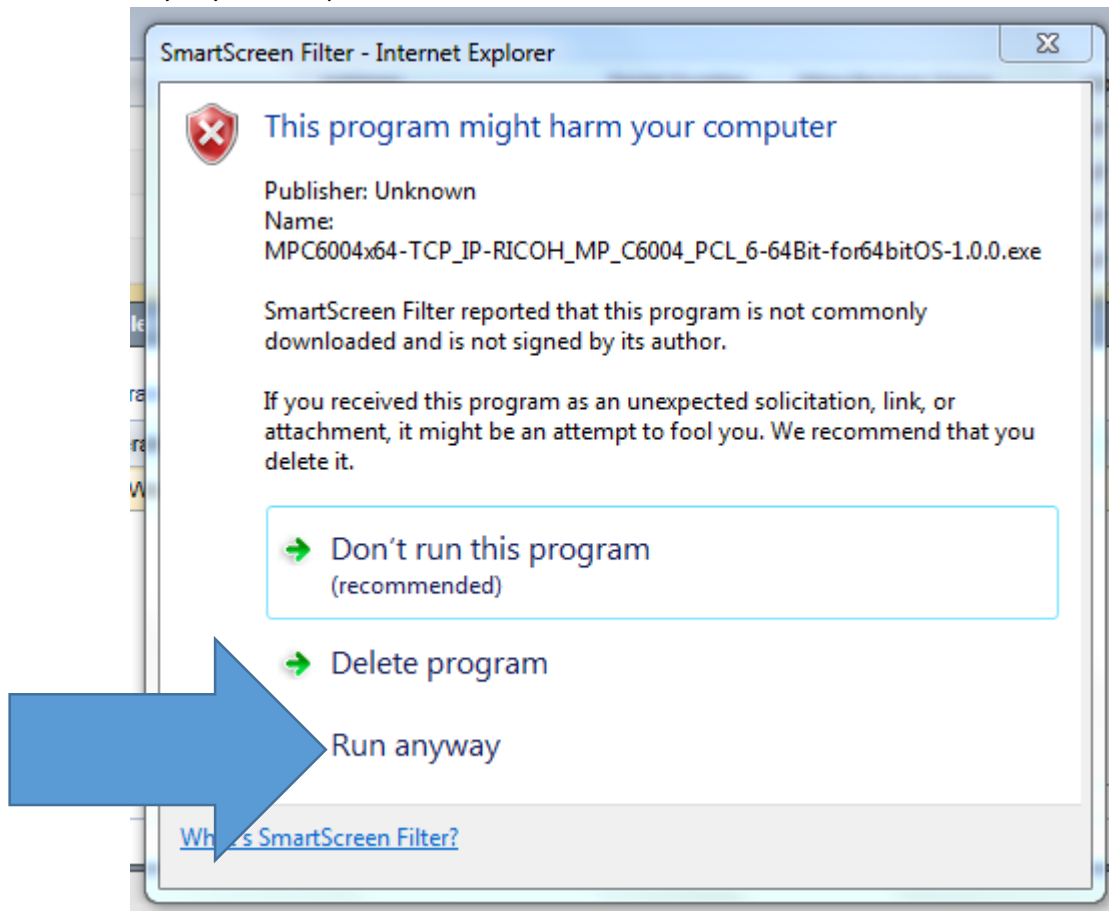
- i. Then click “RUN” button on this screen to finish the install.



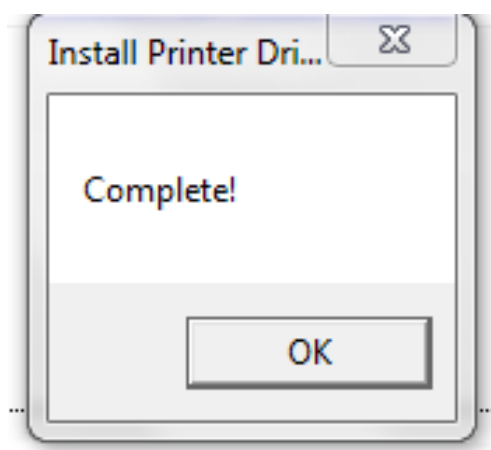
- c. You may get the following pop up on the bottom of the screen, click the “Actions” button on this pop and continue to step “i” and “ii” to complete.



- i. You will get this pop up on your screen, click the more details arrow and select the “Run Anyway” to complete the install.



5. Now the install of the Ricoh device will run automatically and once it is finished you will see a pop up of the complete box.



6. Finally, your Ricoh device is loaded on your computer. You can find it in your “devices and printers” section from your start menu. Please note that double sided and black & white printing are the defaults for all Ricoh devices.